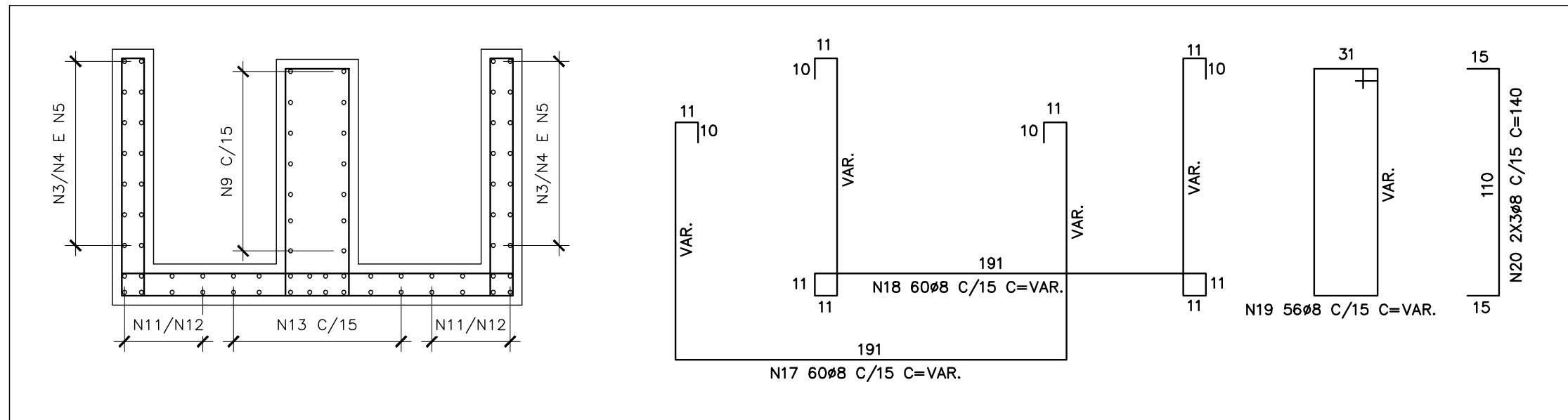


RESUMO AÇO CA-50			
ø(mm)	COMP.(m)	PESO (Kg/m)	TOTAL (Kg)
8.00	2279.8	.400	911.9
TOTAL			911.9



Technical drawing of a reinforced concrete slab and beam system. The top part shows a plan view of a slab with beams N15/N16, N17/N18, and N21. The bottom part shows a cross-section of the slab and beams, with dimensions and reinforcement details. The slab is 110mm thick. The beams are 340mm high. The reinforcement includes N13 8#8 C/15 C=1056, 8 N13 C/15, N21 8#8 C/15 C=190, N17/N18, N15/N16, N14 8#8 C/15 C=643, and 8 N14 C/15. The drawing is labeled '11' at the top left and '11' at the bottom right.

Technical drawings of three reinforcement cage variants (N15, N16, N17) for a rectangular structure. The drawings show the dimensions and reinforcement details for each variant.

**Variant N15:** A U-shaped cage. Dimensions: N7 E N5, N2 E N4, N7 E N5, and N13 E N14. Reinforcement: 34#8 C/15 C=VAR.

**Variant N16:** A rectangular cage. Dimensions: 11, 10, 11, 10, 11, 10, 11, 10. Reinforcement: 34#8 C/15 C=VAR.

**Variant N17:** A rectangular cage. Dimensions: 11, 10, 11, 10, 11, 10, 11, 10. Reinforcement: 34#8 C/15 C=VAR.

ARMAÇÃO PAREDES 6, 8 E LAJE DE FUNDO  
ESCALA - 1:25